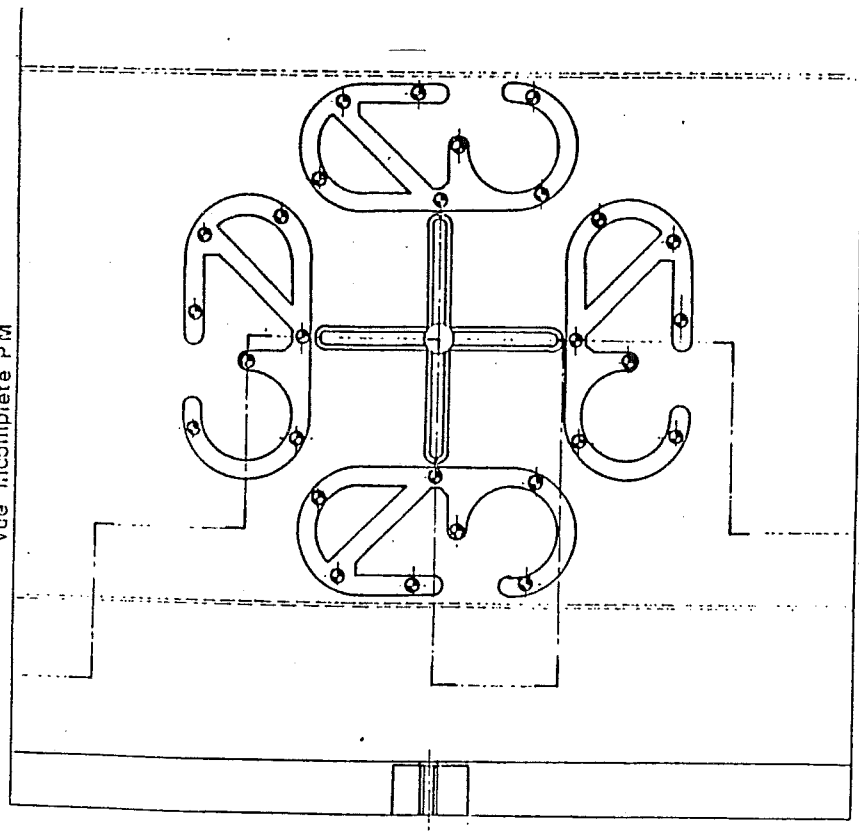
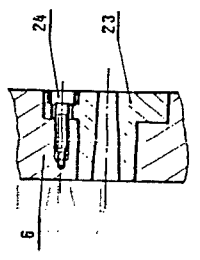


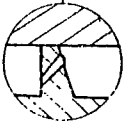
Vue incomplète PM



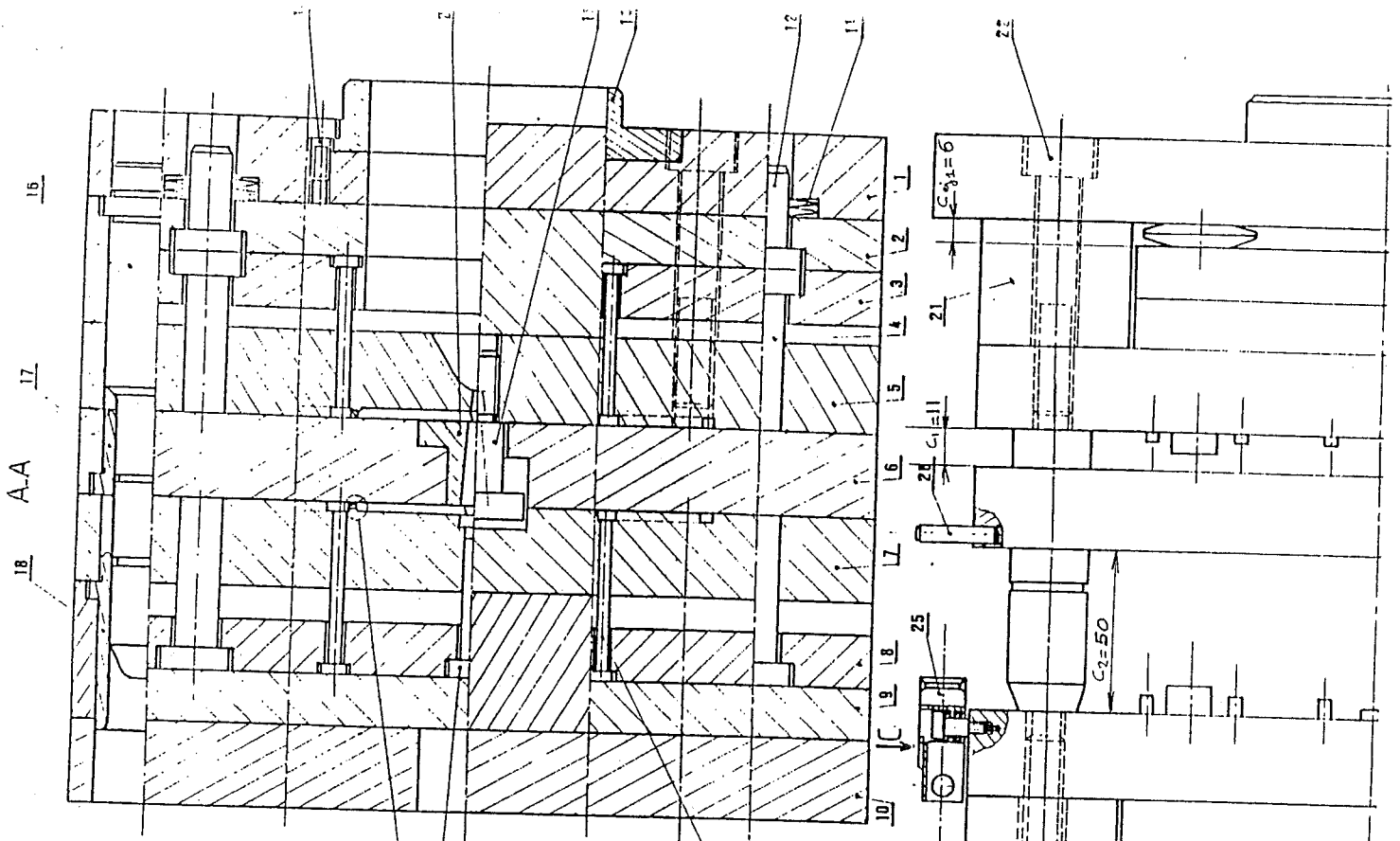
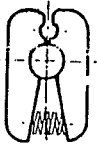
fixation de 23



Echelle: 5:1



C (2:5 seul)



$C_{32} = 10$

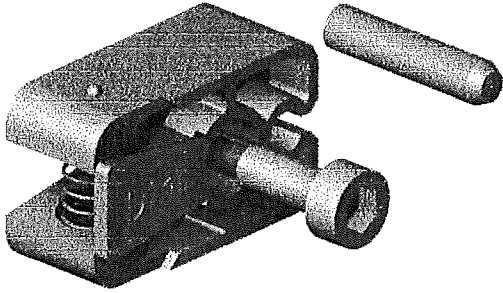
$C_2 = 50$

$C_1 = 11$

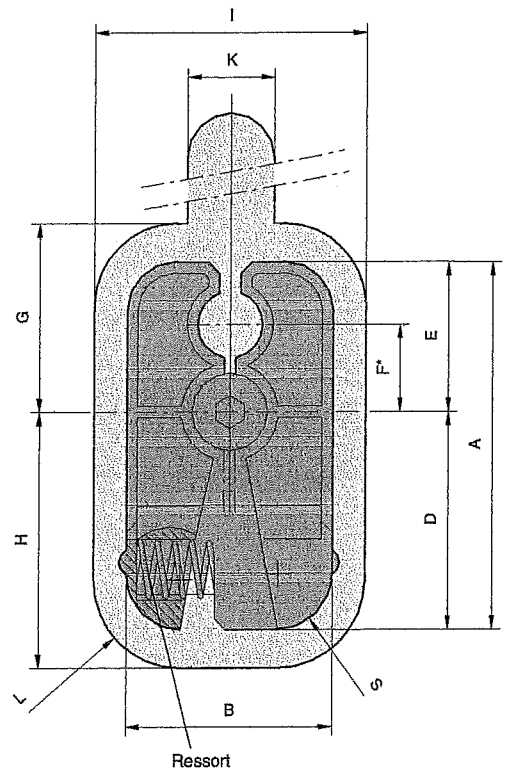
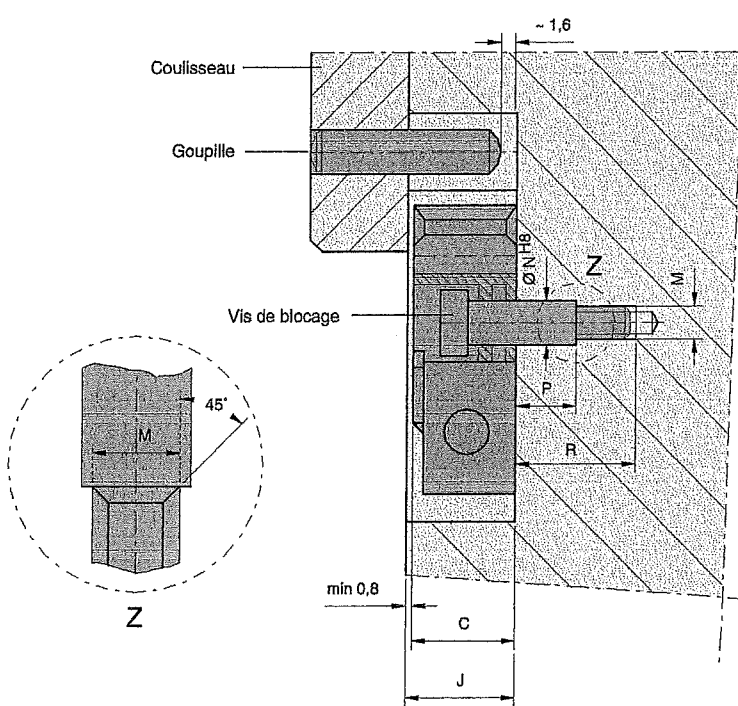
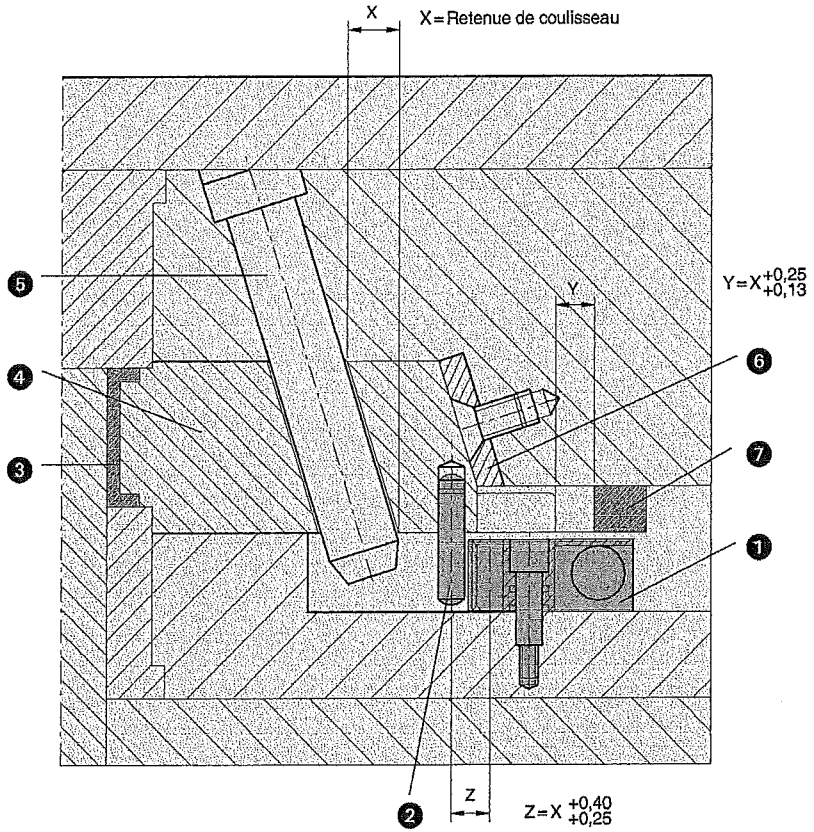
$C_{31} = 6$

MRT

Retenues de coulisseau



- 1 Retenue de coulisseau
- 2 Goupille
- 3 Pièce moulée
- 4 Coulisseau
- 5 Doigt de démoulage
- 6 Plaquette d'usure
- 7 Butée



REF.	Retenue de coulisseau								Logement dans le moule								Goupille		Poids maxi du coulisseau	PM Pièces de rechange		
	A	B	C	D	E	*F	S	G	H	I	J	K	L	M	N	P	R	ø	L	Newton	REF.	Moment de torsion Nm max.
MRT-10M	38	19	16	22	16	9,15	5	19	26	25	17	8	8	M5	6	6	15,5	6	30	100	PM 5x16	10
-20M	54	32	20	33	21	12,7	6	24	36	38	21	10	10	M6	8	8,5	20,5	8	40	200	6x20	15
-40M	86	45	30	53	33	20,3	10	36	56	51	31	12	13	M8	10	10	25,0	10	60	400	8x30	20

*La distance du centre de la goupille au centre de la vis de blocage est à respecter rigoureusement
 Disponible jusqu'à épuisement des stocks

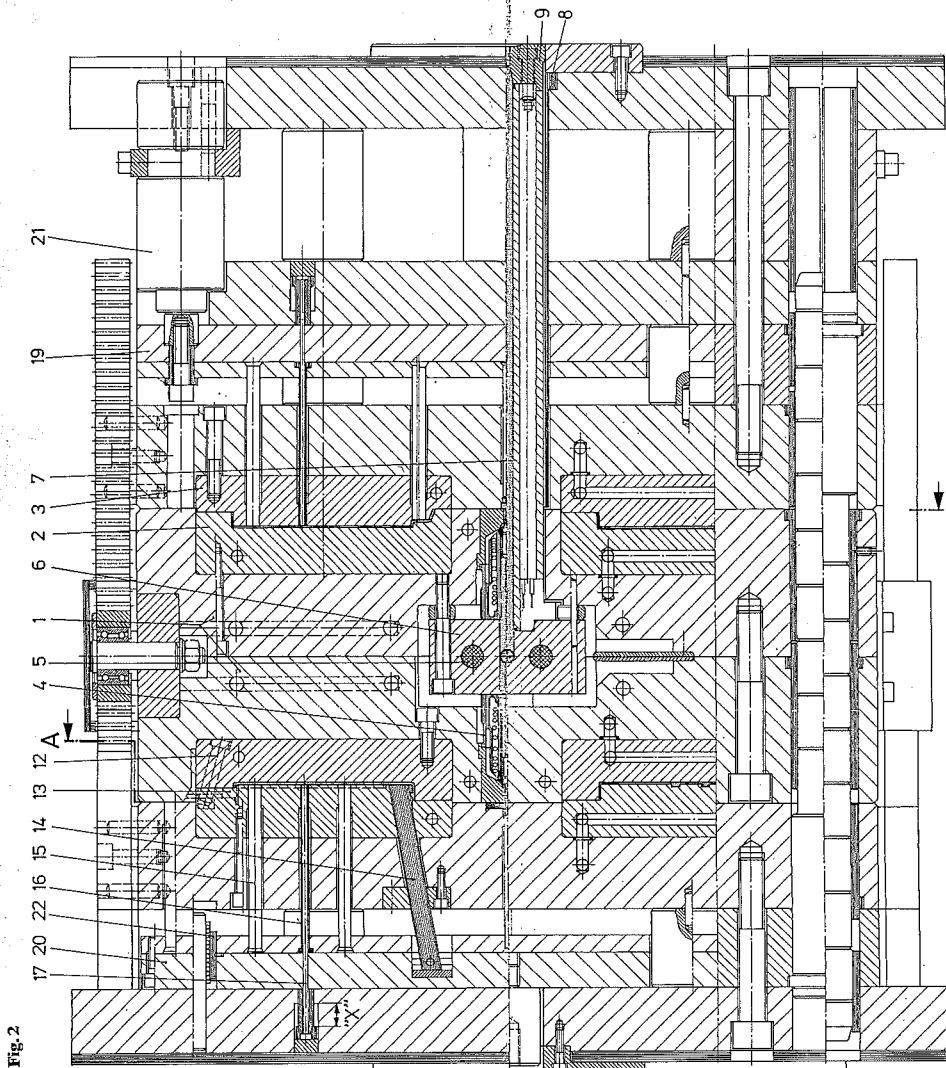


Fig. 2

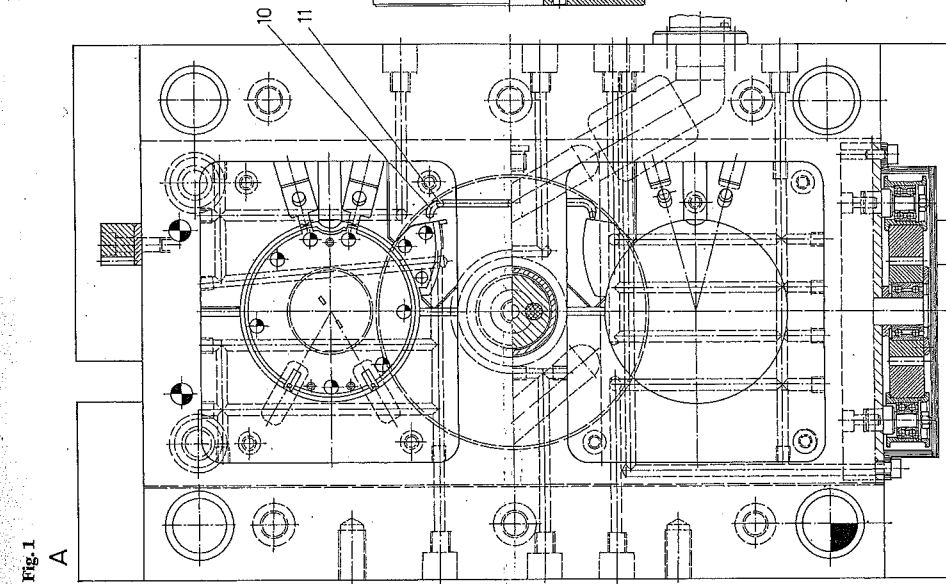


Fig. 1

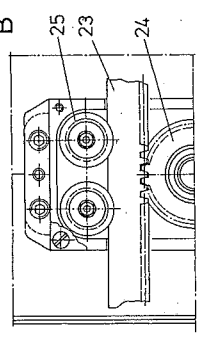
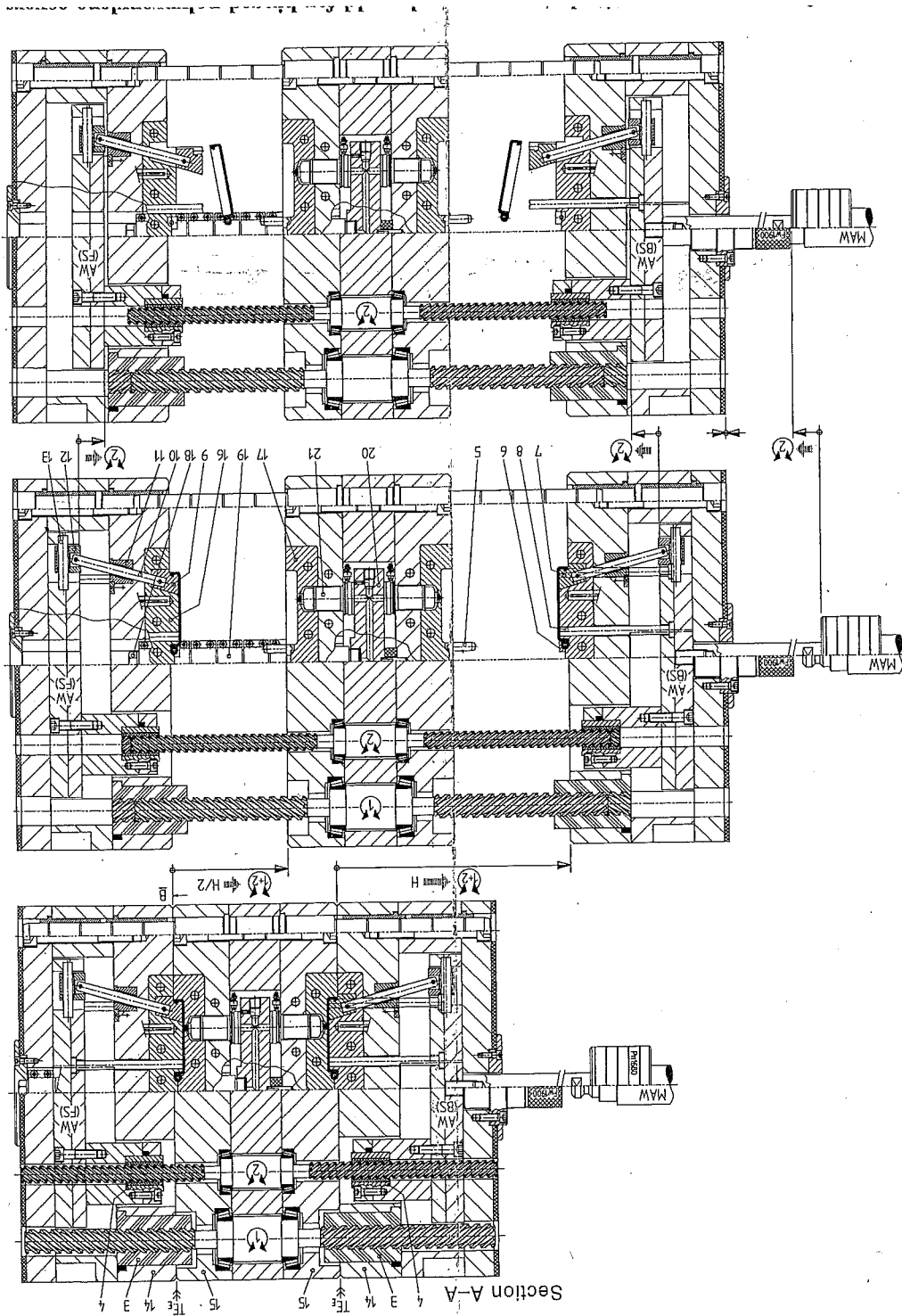
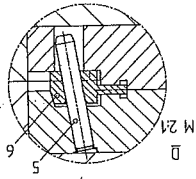
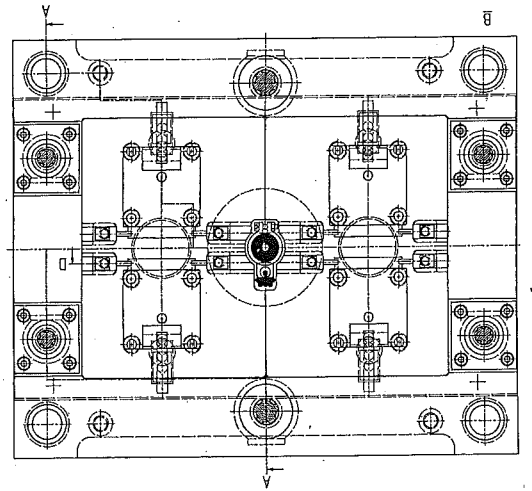


Fig. 3

Figures 1 to 3 2 + 2-cavity stack mold for a coffee maker cover of polypropylene
 1: center block; 2: cavity insert; 3: core; 4: hot-runner nozzle; 5: heater cartridge;
 6: hot-runner manifold; 7: heated sprue bushing; 8: protective tube; 9: bushing plate;
 10: runner; 11: sucker pin; 12: cam pin; 13: slide; 14: lifter; 15: ejector pin;
 16: sleeve ejector; 17: core pin; 19, 20: ejector plates; 21: hydraulic cylinder; 22:
 ball guide; 23: rack; 24: piston; 25: support pillar



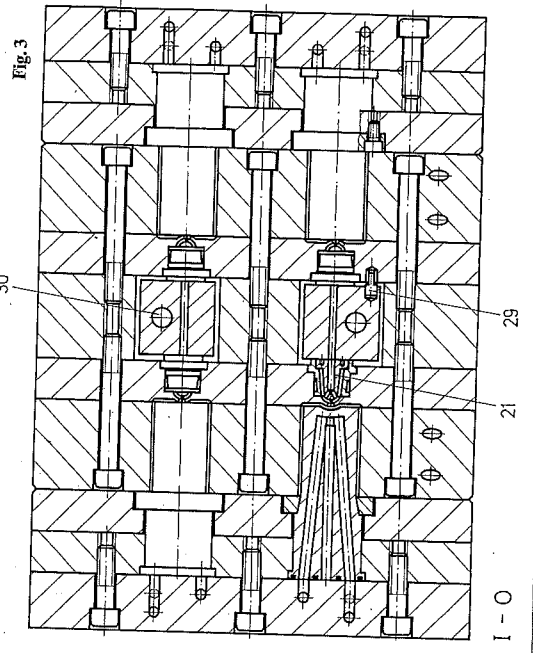
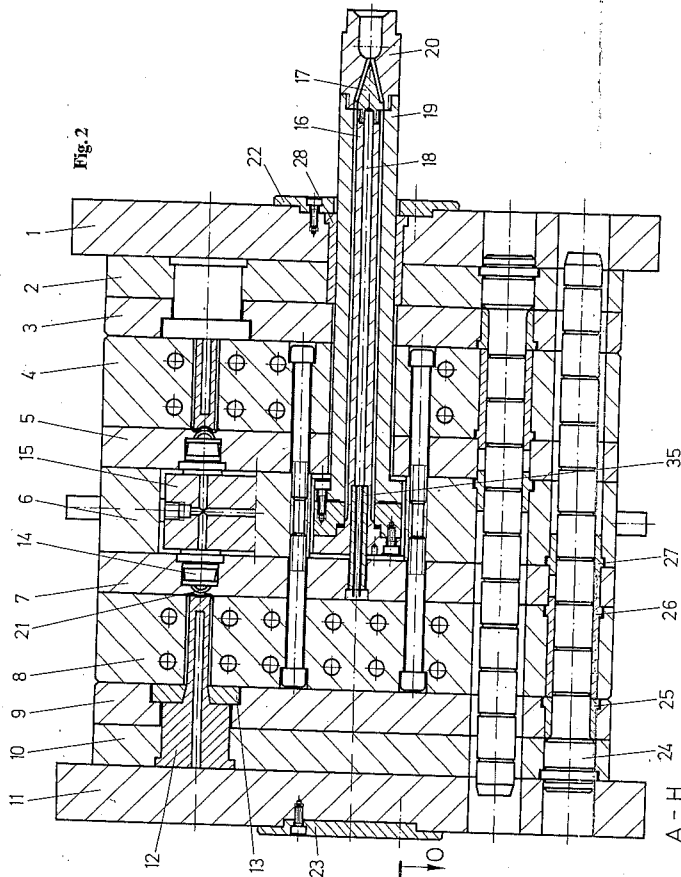
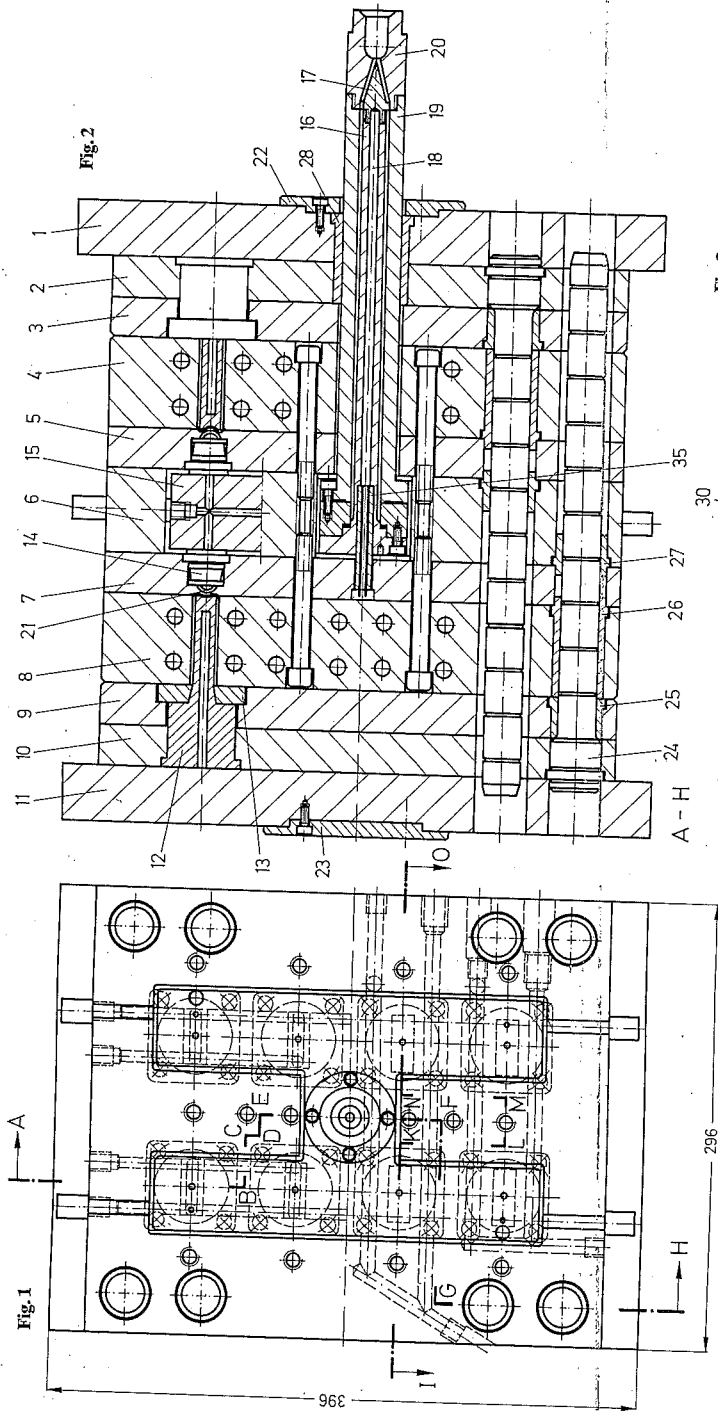


Fig. 4

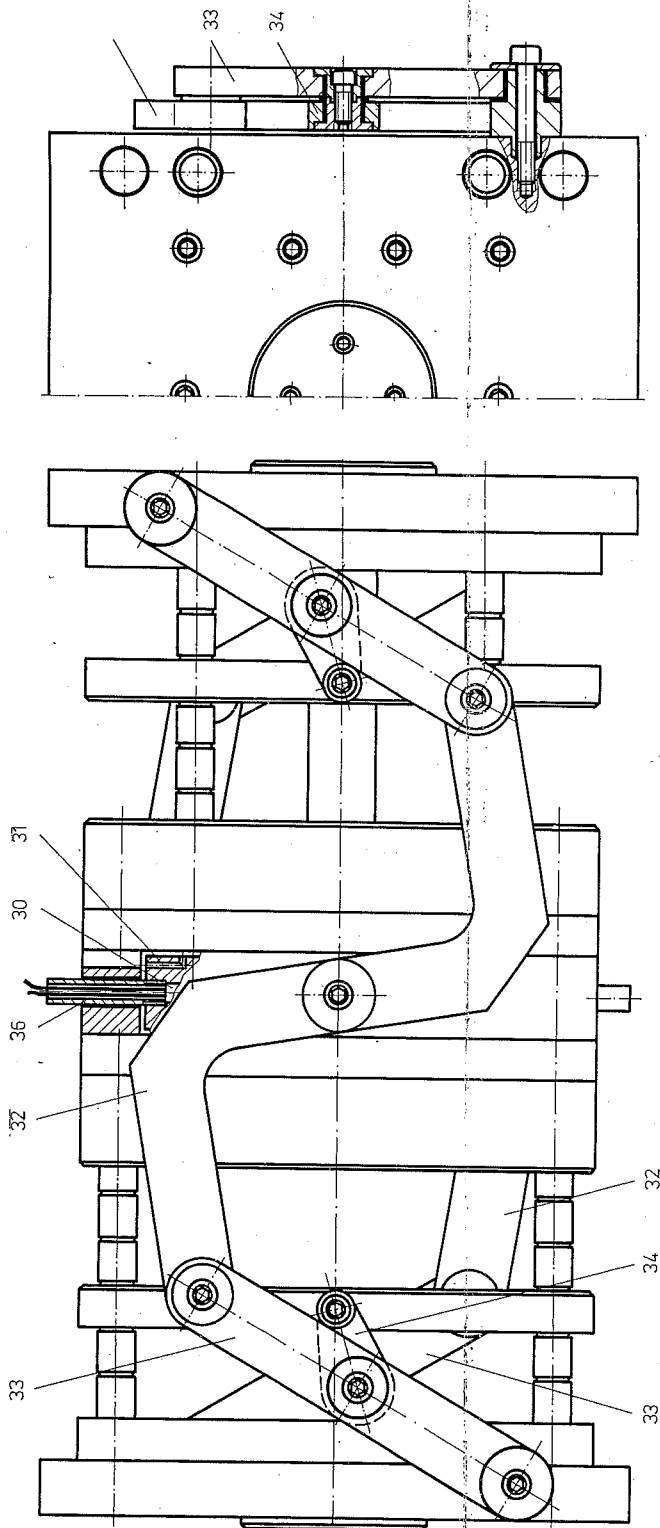


Fig. 5

Figures 1 to 5 8 + 8-cavity stack mold for lozenge-box bottoms in polystyrene
 1: fixed-half mold mounting plate; 2: fixed core retaining plate; 3: fixed-half stripper plate; 4: fixed-half mold cavity plate; 5: fixed-half nozzle plate; 6: not-runner plate; 7: moving-half nozzle plate; 8: moving-half mold cavity plate; 9: moving-half stripper plate; 10: moving core retaining plate; 11: moving-half mounting plate; 12: core; 13: stripper insert; 14: nozzle insert; 15: hot-runner block; 16: torpedo tip; 17: torpedo tip; 18: cartridge heater; 19: heated sprue bushing; 20: sprue bushing; 21: hot-runner gate insert sleeve; 22, 23: locating ring; 24: leader pin; 25, 26, 27: guide bushing; 28: guide bushing; 29: locating pin; 30: cartridge heater; 31: thermocouple; 32: angle lever; 33: connecting lever; 34: pilot link; 35, 36: cartridge heater housing
 The cores 12: are not shown in Fig. 4