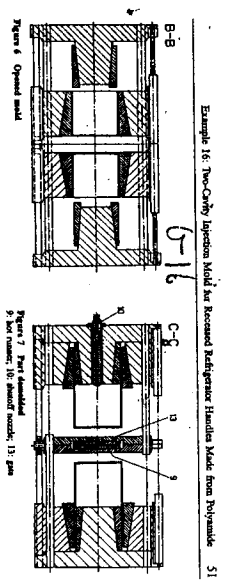
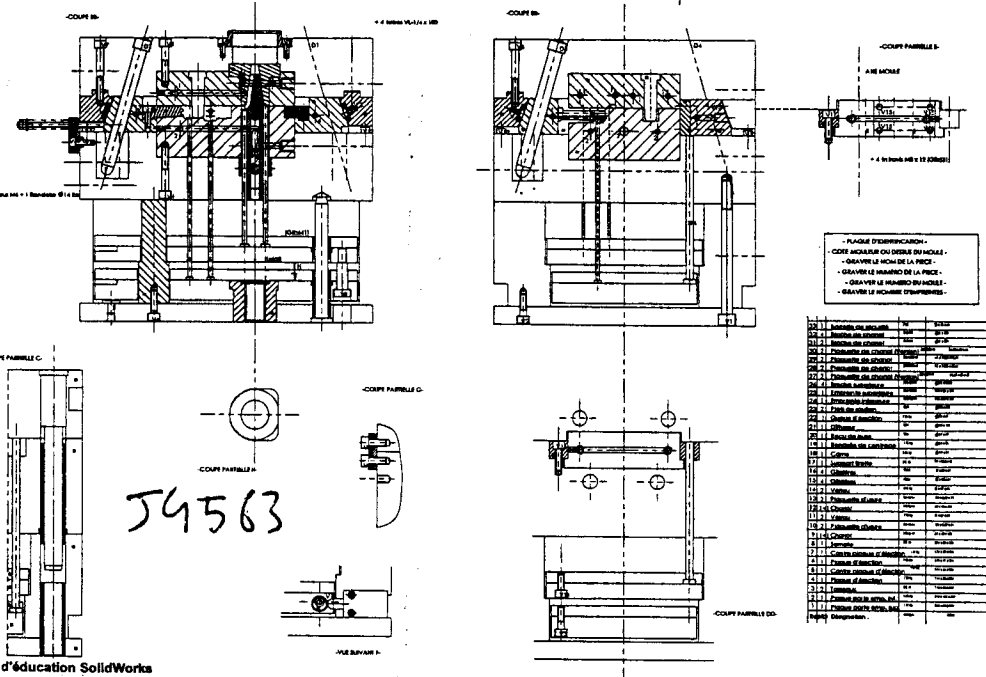


N°	DESCRIPTION	QUANTITE	UNITES	REMARQUES
01	Alésage en acier	1	pièce	
02	Chapeau d'acier	1	pièce	
03	Chapeau d'acier	1	pièce	
04	Chapeau d'acier	1	pièce	
05	Chapeau d'acier	1	pièce	
06	Chapeau d'acier	1	pièce	
07	Chapeau d'acier	1	pièce	
08	Chapeau d'acier	1	pièce	
09	Chapeau d'acier	1	pièce	
10	Chapeau d'acier	1	pièce	
11	Chapeau d'acier	1	pièce	
12	Chapeau d'acier	1	pièce	
13	Chapeau d'acier	1	pièce	
14	Chapeau d'acier	1	pièce	
15	Chapeau d'acier	1	pièce	
16	Chapeau d'acier	1	pièce	
17	Chapeau d'acier	1	pièce	
18	Chapeau d'acier	1	pièce	
19	Chapeau d'acier	1	pièce	
20	Chapeau d'acier	1	pièce	
21	Chapeau d'acier	1	pièce	
22	Chapeau d'acier	1	pièce	
23	Chapeau d'acier	1	pièce	
24	Chapeau d'acier	1	pièce	
25	Chapeau d'acier	1	pièce	
26	Chapeau d'acier	1	pièce	
27	Chapeau d'acier	1	pièce	
28	Chapeau d'acier	1	pièce	
29	Chapeau d'acier	1	pièce	
30	Chapeau d'acier	1	pièce	
31	Chapeau d'acier	1	pièce	
32	Chapeau d'acier	1	pièce	
33	Chapeau d'acier	1	pièce	
34	Chapeau d'acier	1	pièce	
35	Chapeau d'acier	1	pièce	
36	Chapeau d'acier	1	pièce	
37	Chapeau d'acier	1	pièce	
38	Chapeau d'acier	1	pièce	
39	Chapeau d'acier	1	pièce	
40	Chapeau d'acier	1	pièce	
41	Chapeau d'acier	1	pièce	
42	Chapeau d'acier	1	pièce	
43	Chapeau d'acier	1	pièce	
44	Chapeau d'acier	1	pièce	
45	Chapeau d'acier	1	pièce	
46	Chapeau d'acier	1	pièce	
47	Chapeau d'acier	1	pièce	
48	Chapeau d'acier	1	pièce	
49	Chapeau d'acier	1	pièce	
50	Chapeau d'acier	1	pièce	

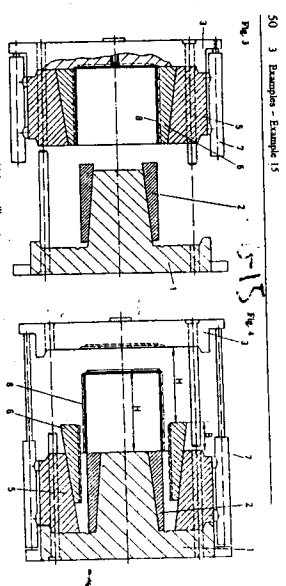


Example 16: Two-Cavity Injection Mold for Rectangular Handle Made from Polyamide 51

Education SolidWorks
diff uniquement

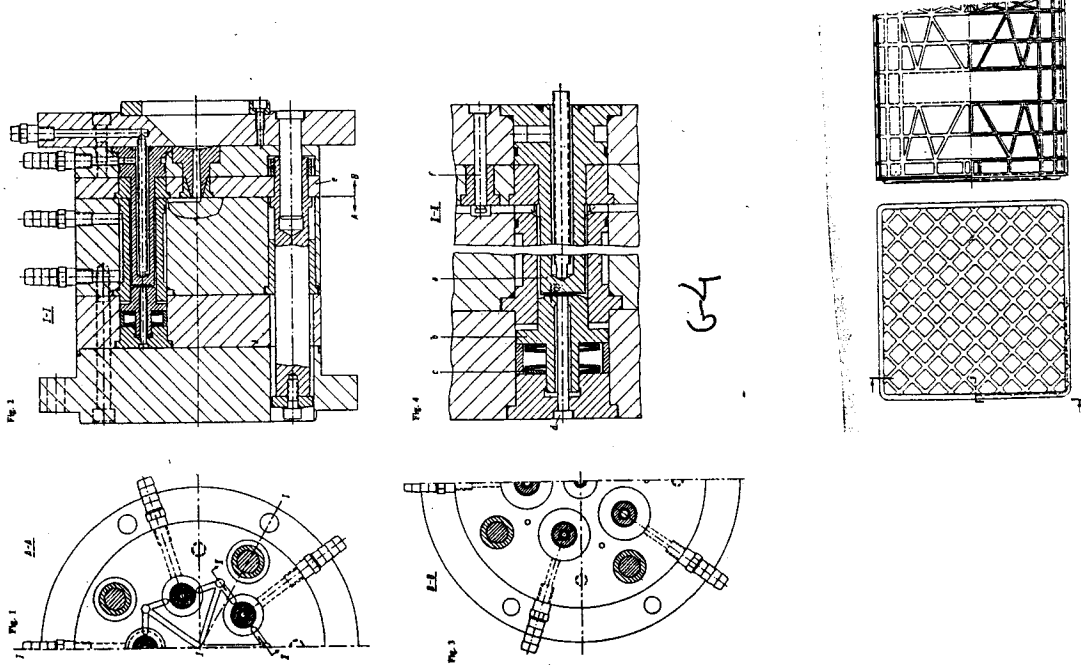


N°	DESCRIPTION	QUANTITE	UNITES	REMARQUES
01	Alésage en acier	1	pièce	
02	Chapeau d'acier	1	pièce	
03	Chapeau d'acier	1	pièce	
04	Chapeau d'acier	1	pièce	
05	Chapeau d'acier	1	pièce	
06	Chapeau d'acier	1	pièce	
07	Chapeau d'acier	1	pièce	
08	Chapeau d'acier	1	pièce	
09	Chapeau d'acier	1	pièce	
10	Chapeau d'acier	1	pièce	
11	Chapeau d'acier	1	pièce	
12	Chapeau d'acier	1	pièce	
13	Chapeau d'acier	1	pièce	
14	Chapeau d'acier	1	pièce	
15	Chapeau d'acier	1	pièce	
16	Chapeau d'acier	1	pièce	
17	Chapeau d'acier	1	pièce	
18	Chapeau d'acier	1	pièce	
19	Chapeau d'acier	1	pièce	
20	Chapeau d'acier	1	pièce	
21	Chapeau d'acier	1	pièce	
22	Chapeau d'acier	1	pièce	
23	Chapeau d'acier	1	pièce	
24	Chapeau d'acier	1	pièce	
25	Chapeau d'acier	1	pièce	
26	Chapeau d'acier	1	pièce	
27	Chapeau d'acier	1	pièce	
28	Chapeau d'acier	1	pièce	
29	Chapeau d'acier	1	pièce	
30	Chapeau d'acier	1	pièce	
31	Chapeau d'acier	1	pièce	
32	Chapeau d'acier	1	pièce	
33	Chapeau d'acier	1	pièce	
34	Chapeau d'acier	1	pièce	
35	Chapeau d'acier	1	pièce	
36	Chapeau d'acier	1	pièce	
37	Chapeau d'acier	1	pièce	
38	Chapeau d'acier	1	pièce	
39	Chapeau d'acier	1	pièce	
40	Chapeau d'acier	1	pièce	
41	Chapeau d'acier	1	pièce	
42	Chapeau d'acier	1	pièce	
43	Chapeau d'acier	1	pièce	
44	Chapeau d'acier	1	pièce	
45	Chapeau d'acier	1	pièce	
46	Chapeau d'acier	1	pièce	
47	Chapeau d'acier	1	pièce	
48	Chapeau d'acier	1	pièce	
49	Chapeau d'acier	1	pièce	
50	Chapeau d'acier	1	pièce	



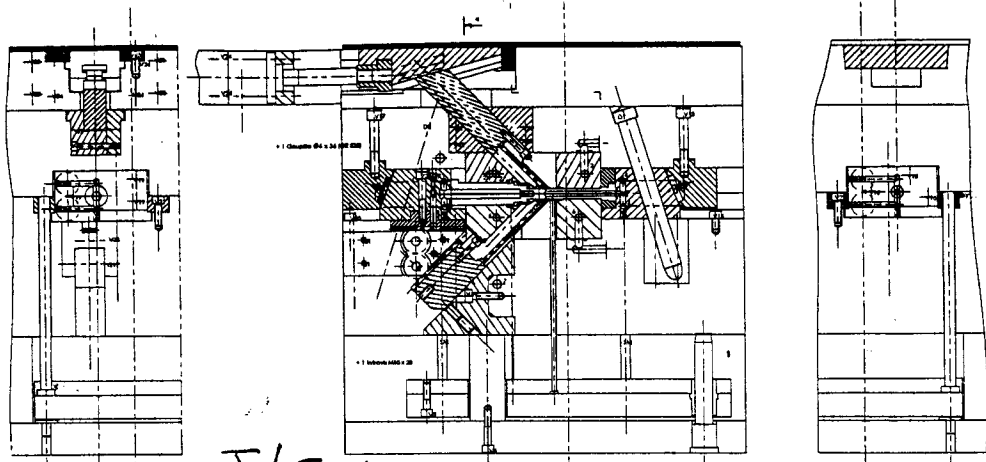
50 3 Exemples - Example 15

Education SolidWorks

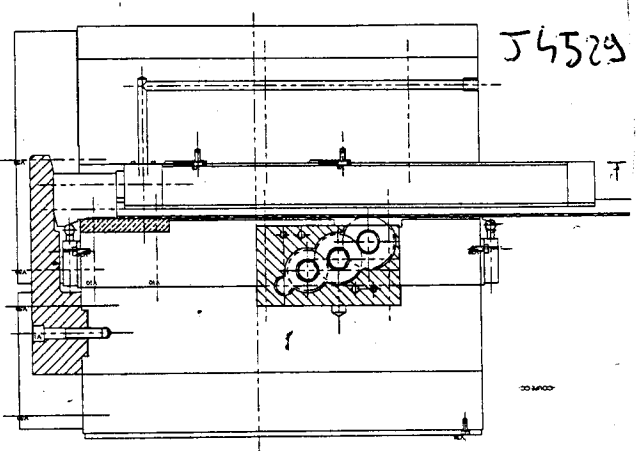


Example 15
Figure 1: Milk crate
Figure 2: Single-cavity mold for a milk crate
1: core; 2: core lifters; 3: bottom plate of cavity; 4: sprue bushing; 5: cavity frame; 6: external slides; 7: hydraulic cylinders; 8: molded part

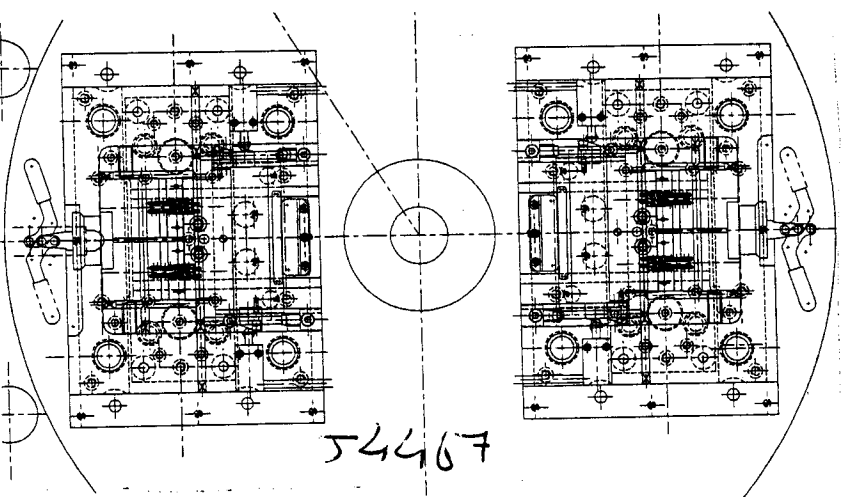
Autres moules 2



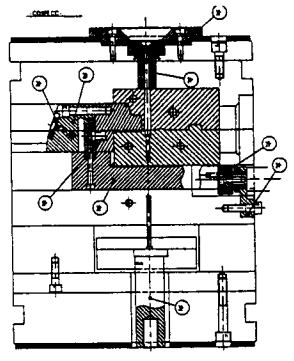
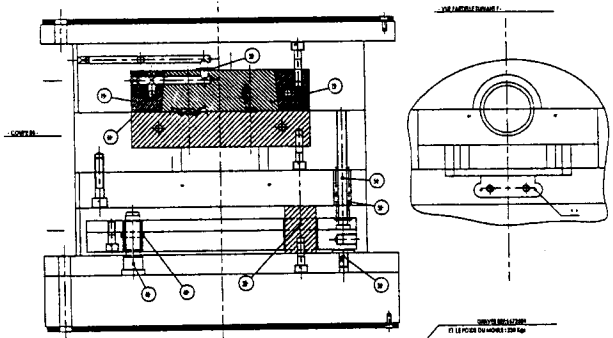
J4529



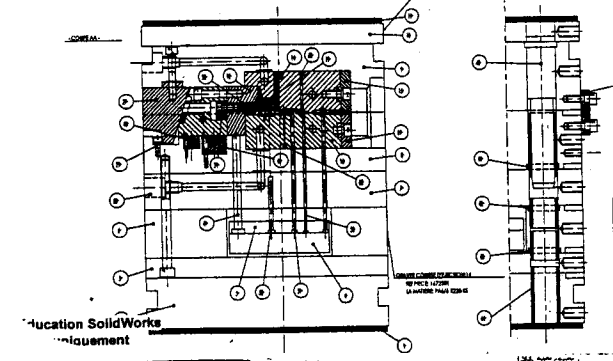
J4529



J4467



J4467



- 1 PARTIE FIXE -
- 2 PARTIES MOBILES -

- FONCTION: ...
 - COMPOSITION: ...
 - MATERIAUX: ...
 - DIMENSIONS: ...
 - MONTAGE: ...
 - ENTRETIEN: ...
 - REMARQUES: ...

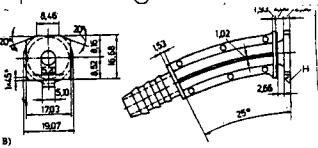


Figure 1 The pipe shown (A) has a curved bore as shown in drawing (B)
H = Scrap-61 book

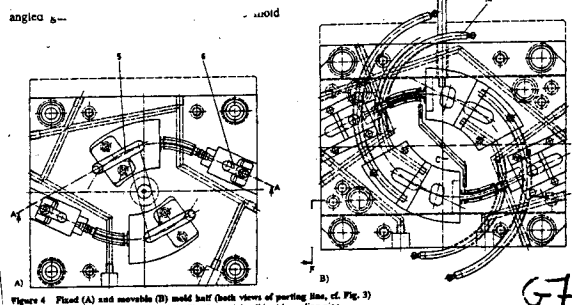
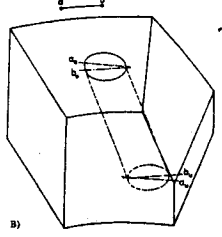
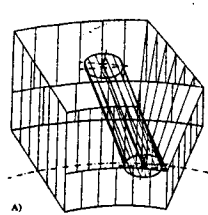
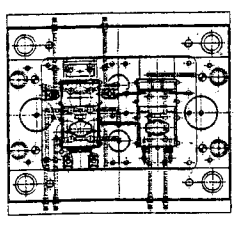
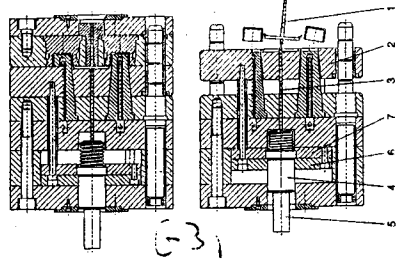
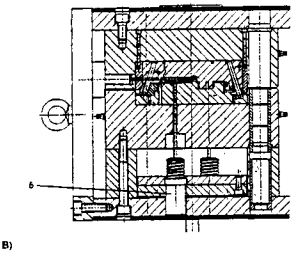
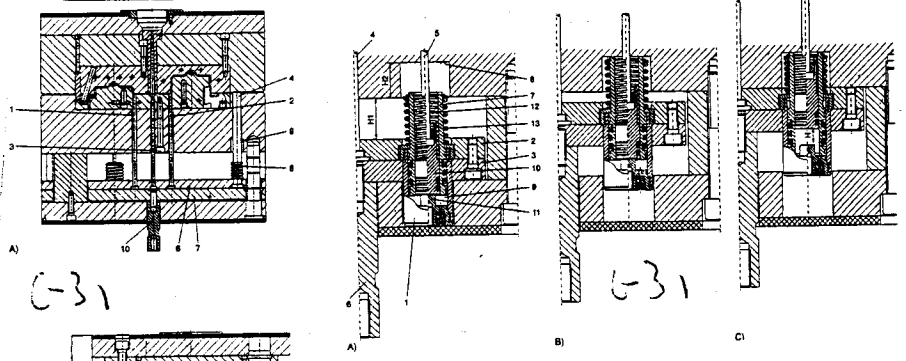
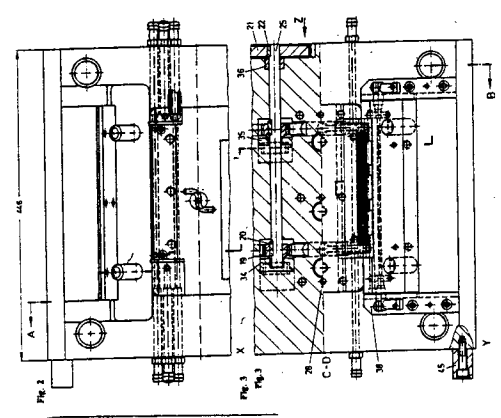
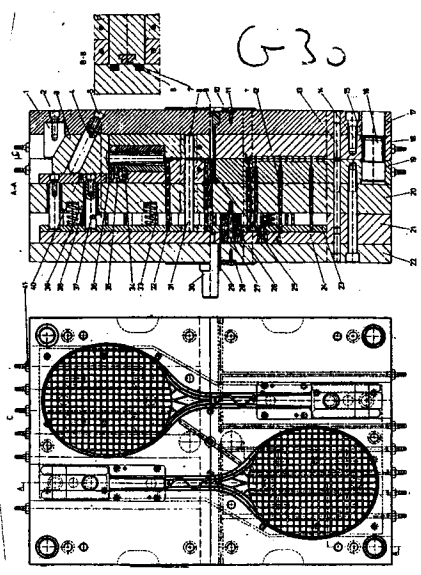
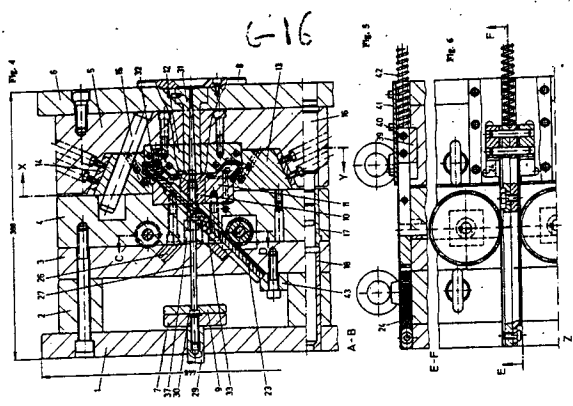


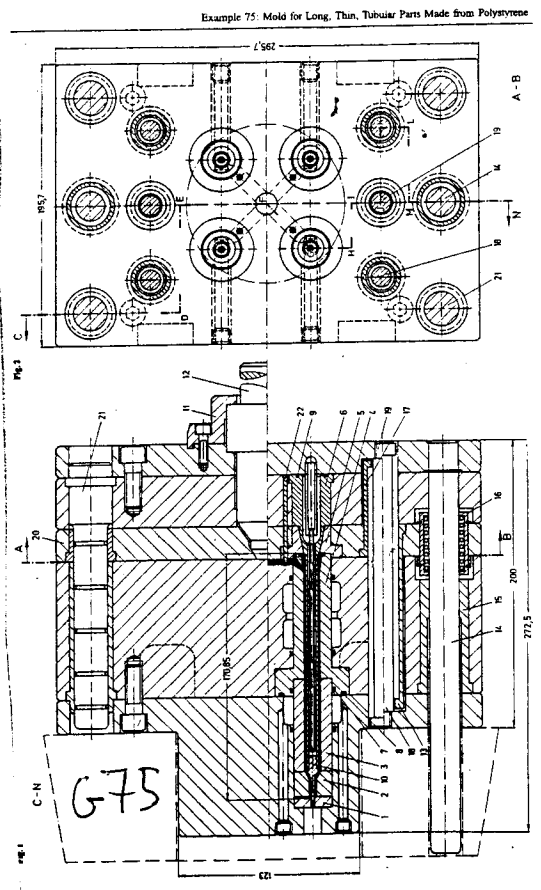
Figure 4 Fixed (A) and movable (B) mold half (both views of parting line, cf. Fig. 3)
angled pillar for curved slide; 6: angled pillar for straight slide; 14: cooling pipe

Autres moules 2

G7



Autres moules 3



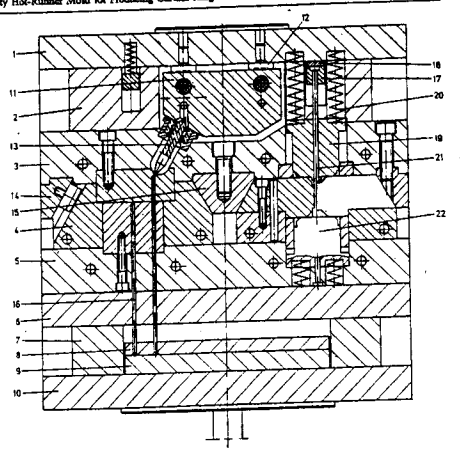
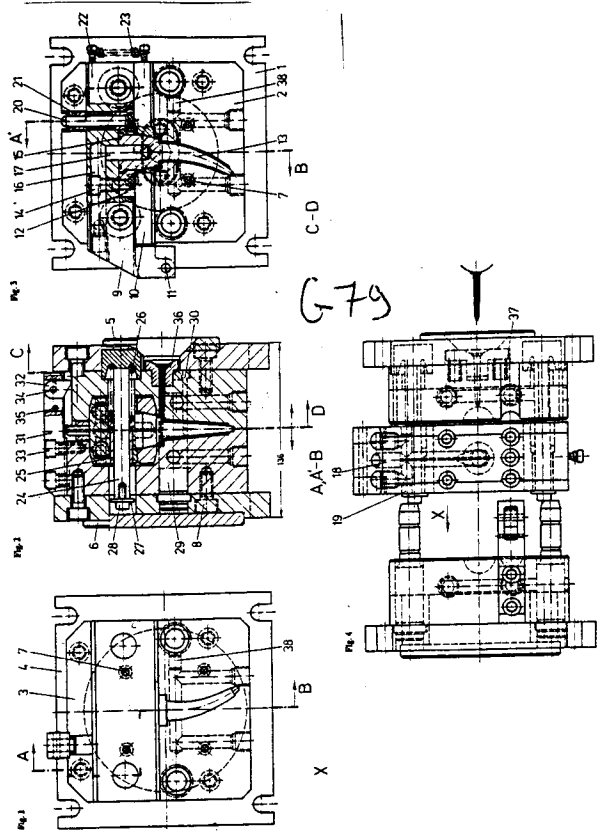


Figure 2 Section through the 20-cavity injection mold with hot-runner manifold and indirectly heated (thermally conductive) torpedos as well as an assembly facility for fitting the carriage-ring runners together inside the mold.
 1: mounting plate; 2: strip; 3: mold bottom; 4: slide; 5: mold plate; 6: clamping plate; 7: strip; 8: spacer cushion plate; 9: carrier plate; 10: clamping plate; 11: low-temperature manifold; 12: support post; 13: indirectly heated plate; 14, 15: heat block; 16: spacer post; 17: thermally conductive torpedos; 18, 19: heated block; 20: compression spring; 21: insert; 22: pressure plate; 23: compression spring; 24: spacer; 25: pressure plate

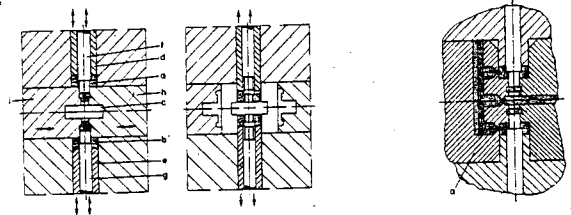
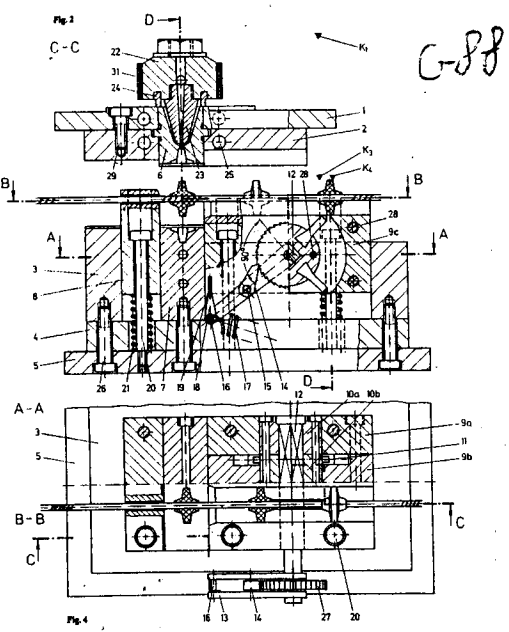
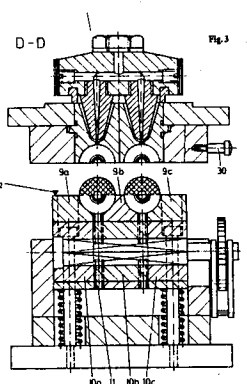


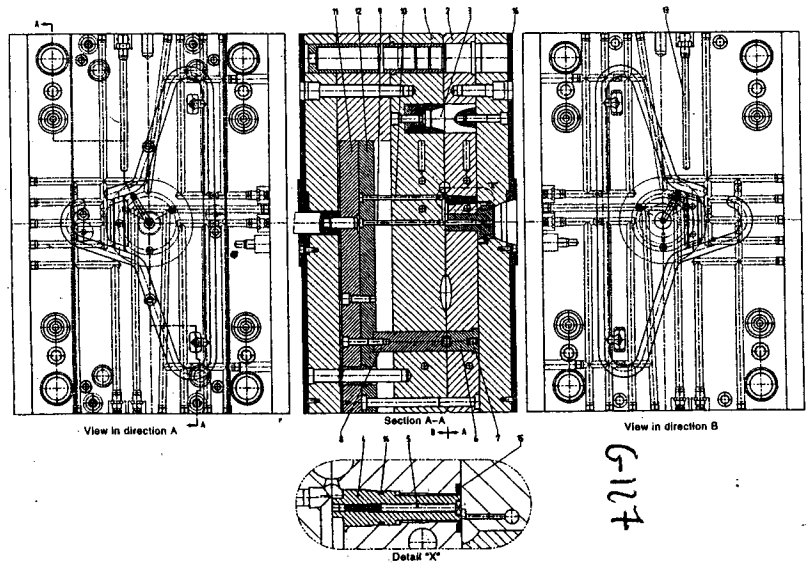
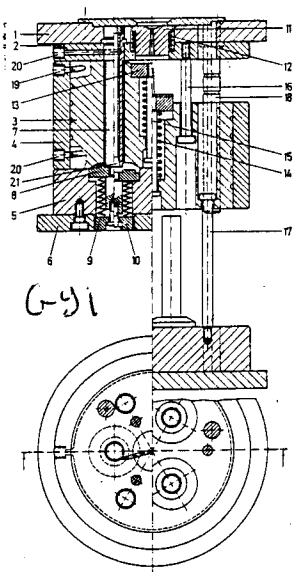
Figure 3 Assembly procedures for the carriage-ring mold



Figures 2 to 4 Injection mold for the automatic molding of conveyor plates onto conveying cables for mechanical pipe conveyors.
 1: upper mold clamping plate; 2: upper mold cavity retainer plate; 3: lower mold clamping plate; 4: mold base plate; 5: lower mold clamping plate; 6: upper mold cavity half; 7: lower mold cavity half; 8: moving cable feed; 9: moving cable discharge; 10: piston cylinder; 11: piston; 12: square shaft; 13: double lever; 14: pawl; 15: pawl shaft; 16: cross pin; 17: spring; 18: eye on the draw cable; 19: draw cable; 20: screw; 21: spring; 22: injection head; 23: beryllium-copper nozzle; 24: pressure ring; 25: cooling water channels; 26: connecting bolt; 27: ratchet wheel with buttress teeth; 28, 29: connecting bolts; 30: bolt; 31: heating element
 K₁ to K₄: switches



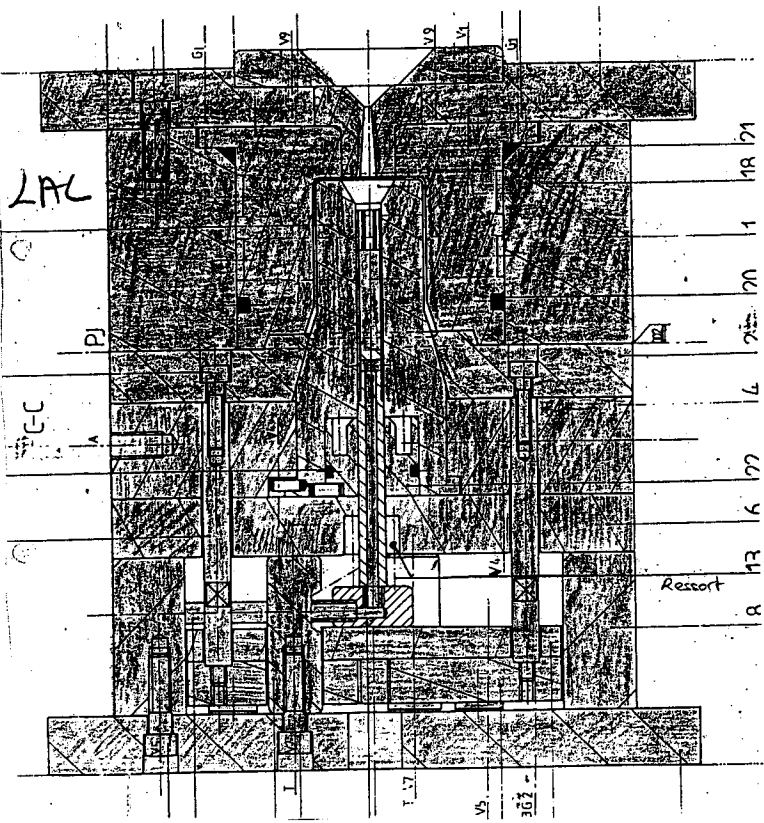
Example 88: Two-Cavity Injection Mold for the Automatic Molding of Conveyors



Example 127: Single-Cavity Injection Mold for a PE-HD Choker Hanger

G-127
 Injection gear

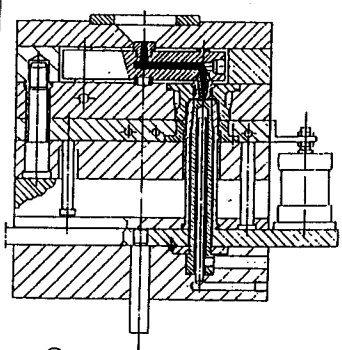
Arches mouldes 4



LAC

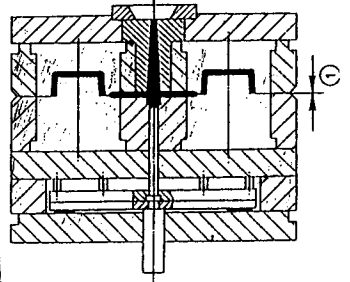
CC

Ressort



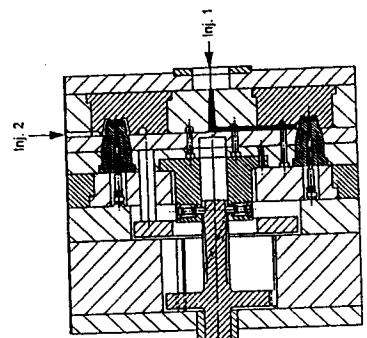
Aoule à noyaux escopissables
type DME, (fonction filetage)

P. Cos



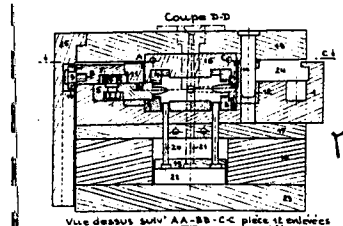
Moule à deux plateaux en plan
de joint, injection latérale

P. Cos



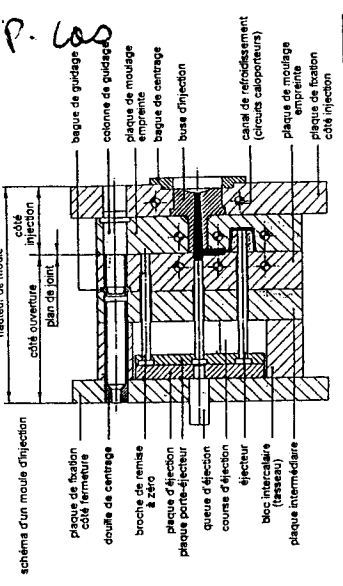
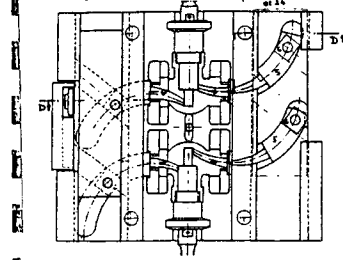
viles rotatifs pour
oulage en deux couleurs

P. Cos



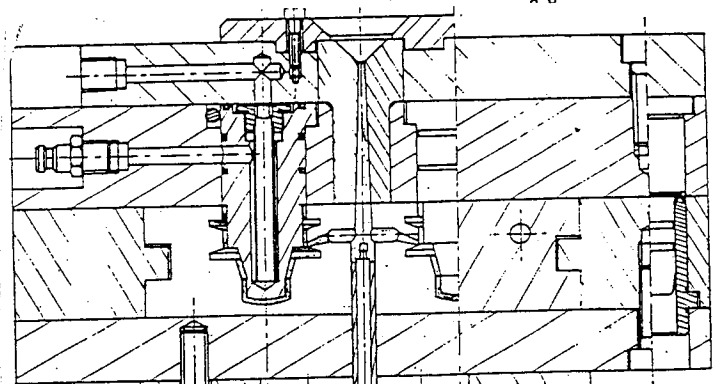
III-3-g
Moule d'injection
à noyaux courbes

Moulique

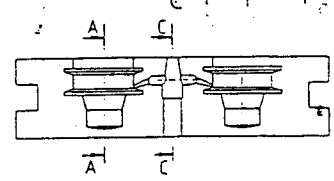


P. Cos

- plaque de fixation côté fermeture
- douille de centrage
- broche de remise à zéro
- plaque d'éjection
- plaque porte-éjecteur
- garets d'éjection
- course d'éjection
- éjecteur
- bloc intercalaire (ressort)
- plaque intermédiaire
- hauteur de moule
- côté ouverture
- côté injection
- Plan de joint
- bague de guidage
- colonne de guidage
- plaque de moulage
- empreinte
- bague de centrage
- buse d'injection
- canal de refroidissement (circuits calorifères)
- plaque de moulage
- empreinte
- plaque de fixation côté injection



trains de
partie mobile
montés à l'encre

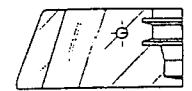


A-A

A-A

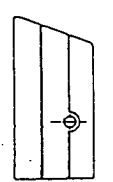
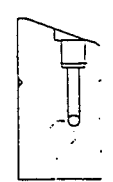
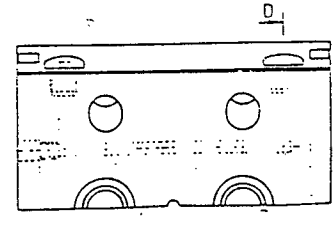
A-A

CC

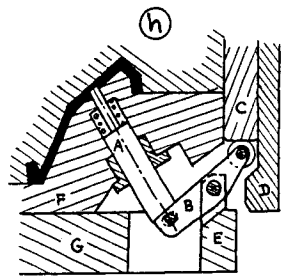
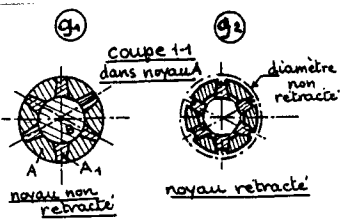
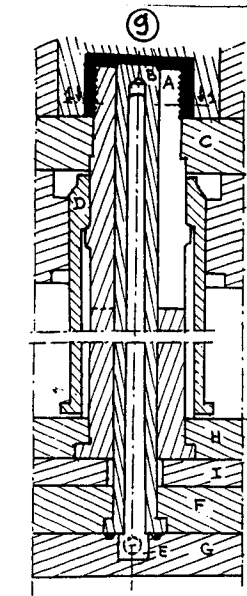


DD

LAC



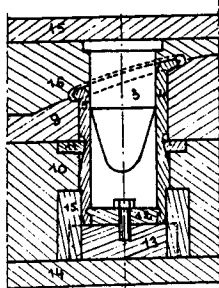
Autres
moules 5



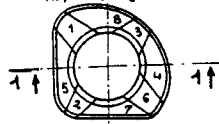
LAL

III-4 a e h

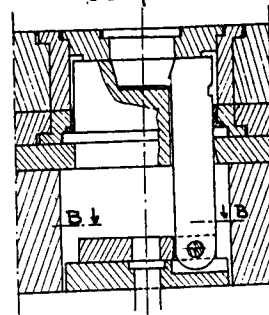
coupe 1-1



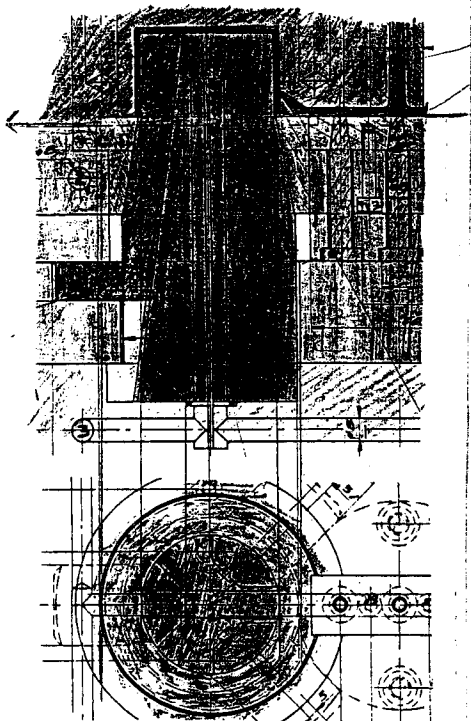
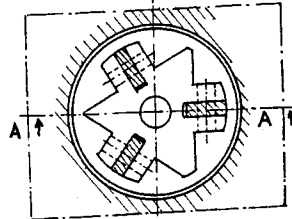
vue de dessus du noyau fragmenté



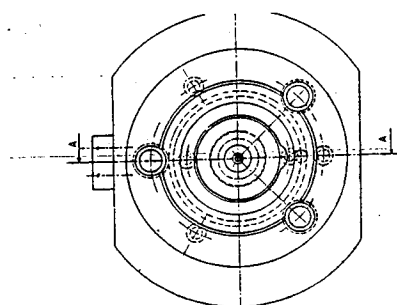
Contre-dépouille interne sur tout le périmètre.



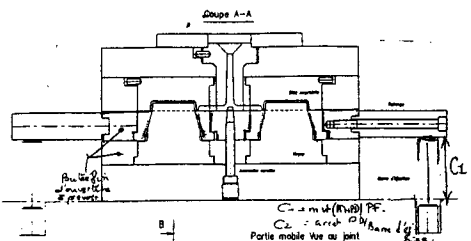
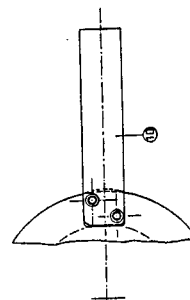
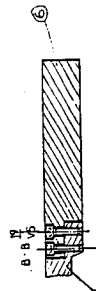
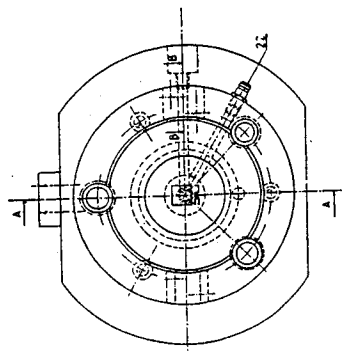
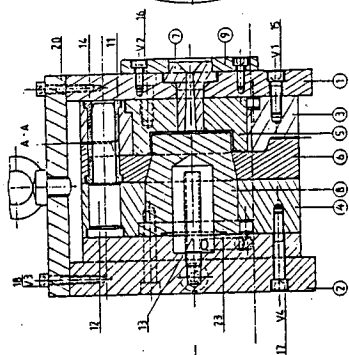
coupe BB



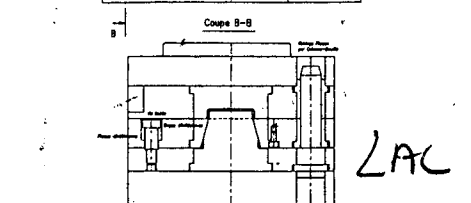
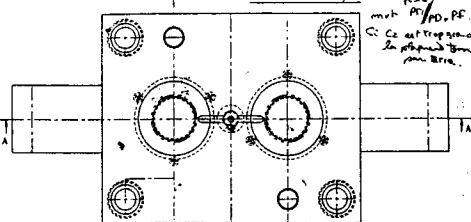
LAL



LAL



Ce est un (ou des) PF.
Ce est un (ou des) PF.
Partie mobile vis au joint
mult. PF/PO. PF.
C. Ce est l'opposé de la partie fixe
non fixe.



LAL

Ailes moules 6

Injection compression + Elastomere

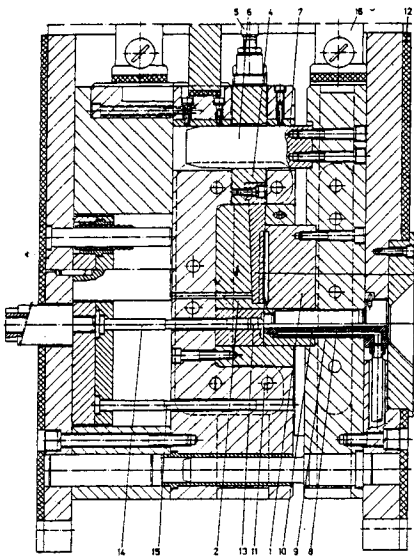


Figure 2 Single-cavity injection compression mold
1: core insert; 2: cavity insert; 3: slide; 4: slide retainer; 5: piston rod;
6: lock; 7: wear plate; 8: polished runner (cold runner); 9: insulating
gap; 10: cooling channel; 11: cartridge heater; 12: insulating plate;
13: sprue puller; 14: ejector; 15: pushback pin; 16: junction box

G62 Injection compression

Example 68: Eight-Cavity Injection Mold for Manufacturing Bellows Made from Silicone Rubber 177

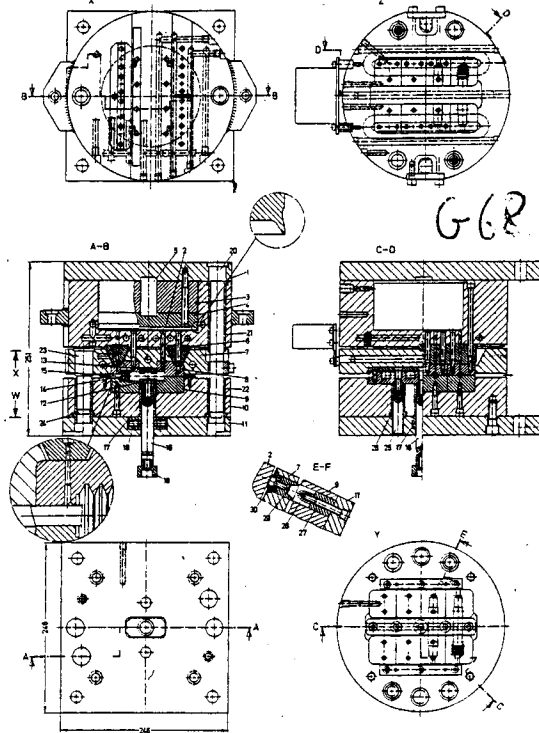
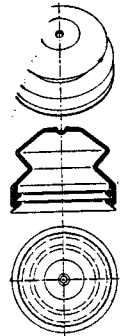


Figure 1 Protective cap of LSR

G114

G114, éjection pneu-
-motique



Example 63: Two-Cavity Injection Compression Mold for a Housing Component Made from a Thermosetting Resin 16:

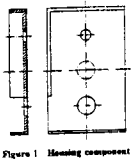


Figure 1 Housing component

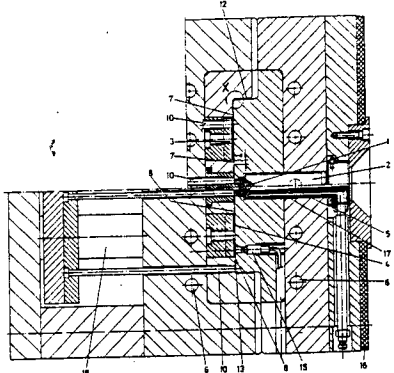


Figure 2 Two-cavity injection compression mold for a housing component
1: flow divider; 2: sprue bushing; 3, 4: mold cavity; 5: cooling
channel; 6: cartridge heater; 7, 8: flash edge; 10: ejector; 12: shear
edges; 13: flash rim; 15: pressure sensor; 16: insulating plate; 17:
insulating gap; 18: support

G63

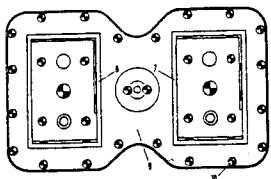


Figure 3 Common pocket
9: common pocket; 10: ejector

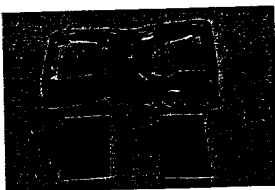
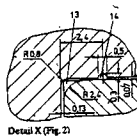


Figure 4 Molded (bottom) parts with separated flash (top)



Detail X (Fig. 2)

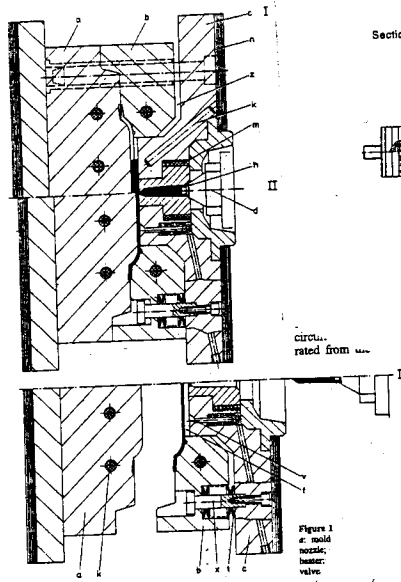


Figure 1
nozzle;
heater;
valve

G64

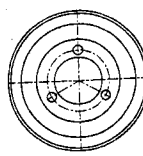
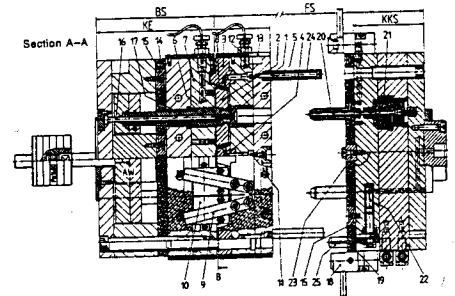


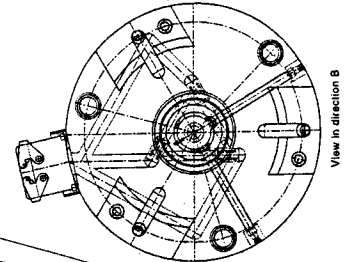
Figure 1 Thermoset V-belt pulley

G115



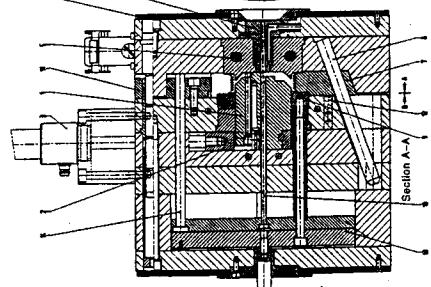
Autres moules 7

Example 125: Single-Cavity Injection Compression Mold for Thermoset 30

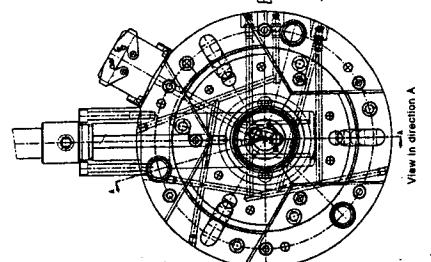


View in direction B

G125

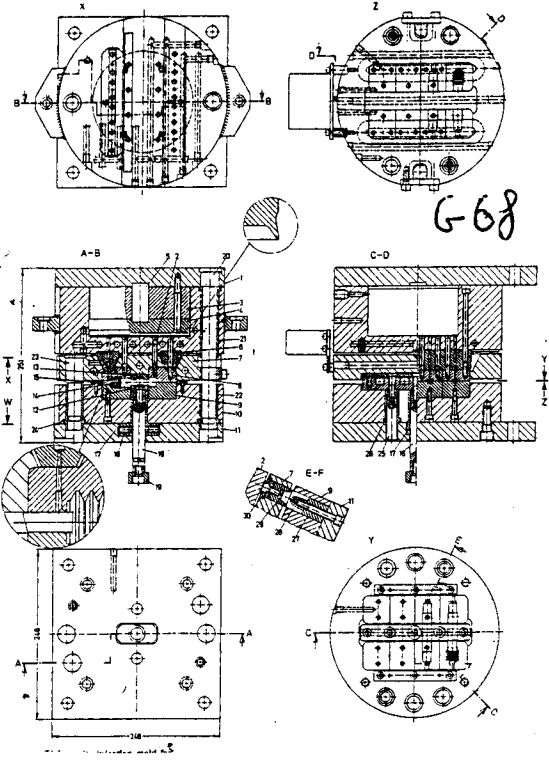


Section A-A



View in direction A

Auher moules 8

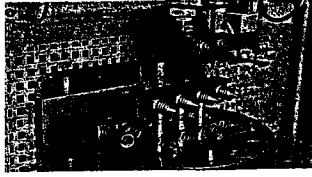


G-G8



G-G8

Figure 1 Injection molded bellows of silicone rubber



G-G8
(Electrometal)